



Year 10  
Parents' Information Evening

8 November 2018

# The Courses

The Core: 9-1 GCSEs (5 or 6 GCSEs) 100% Examination

English Language, English Literature & Maths

Combined Science or Biology, Chemistry & Physics

+ RS Short Course (exam at end of Year 10)

+ Options from:

9-1 GCSEs (100% Exam)

Computing

French

Geography

History

Religious Studies

Spanish

Statistics

9-1 GCSEs (Exams and NEA)

Art

Dance

Design & Technology

Drama

Engineering

Music

Home Economics: Food & Nutrition

PE

Non-GCSEs

Business

Health & Social Care

Sport



# The New Grades

Old GCSEs	9-1 GCSEs	OCR National/BTEC Tech Award
A*	9	Level 2 Distinction* Level 2 Distinction
A	8	
	7	
B	6	Level 2 Merit Level 2 Pass
C	5	
	4	
D	3	Level 1 Distinction Level 1 Merit Level 1 Pass
E	2	
F	1	
G		

Maths, science and languages have tiers.

Foundation: up to Grade 5

Higher: down to Grade 4



# Non-Exam Assessment

An outline of when the assessments are currently taking place.

## Art (100%)

Throughout the course

## Drama (60%)

September – Christmas (Year 11)

January – April (Year 11)

## Music (60%)

Summer Term (Year 10)

Autumn Term (Year 11)

Spring Term (Year 11)

## Computing (0%) – *still completed as part of the course.*

Mid-September – Christmas (Year 11)

## Engineering (40%)

June (Year 10) – February (Year 11)

## Food and Nutrition (50%)

September – February (Year 11)

## Product Design (50%)

June (Year 10) – February (Year 11)



# Setting

English	7 ability sets	All follow same specification, although different groups study different texts).
Maths	7 ability sets	sets 1 - 4 following Higher tier ( <i>final decision for set 4 to be made in Year 11, although it's likely to be Foundation</i> )  sets 5 - 7 following Foundation tier
Science	7 groups	2 x Triple science groups  3 x Higher combined science groups  2 x Foundation combined science groups

Options groups are all mixed ability.



# Go4schools

What can you see?



Target Grade – the target for the end of the course in Year 11.

Current Grades – a weighted calculation based on scores in the key assessments.

Estimated Grades – indication of what they are likely to achieve at the end of course.



# The Basics For Successful Learning...

- Attendance
- Equipment
- Presentation
- Time and space for home learning
- Meeting deadlines
- Rest, relaxation and food!
- Routines



*These are the things we need to support your children with.*

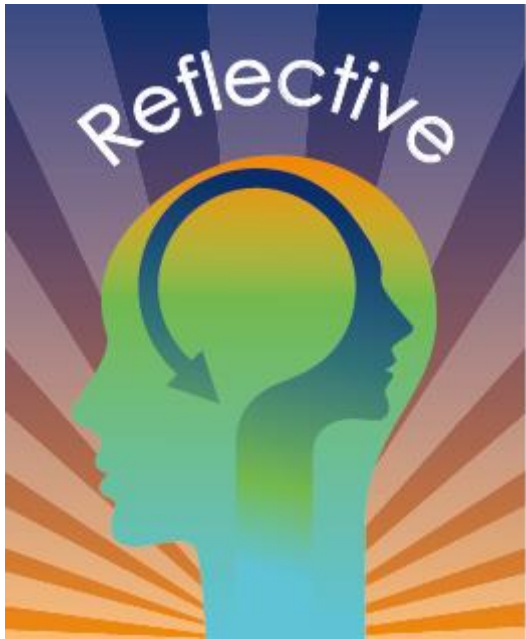


# Revision

This is crucial for all assessments throughout Years 10 & 11

An opportunity to find out which method/s works best for each subject.

Also, it is a chance to build up notes for longer assessments – Year 10 exams and Year 11 mocks.



*Assessments throughout Year 10 and 11 are important opportunities for students to prepare for the GCSE exams at the end of Year 11.*

*End of Year 10 Exams*

*Year 11 Mocks – both of these are over 7/8 days with exams in the vast majority of subjects and multiple exams for core subjects.*

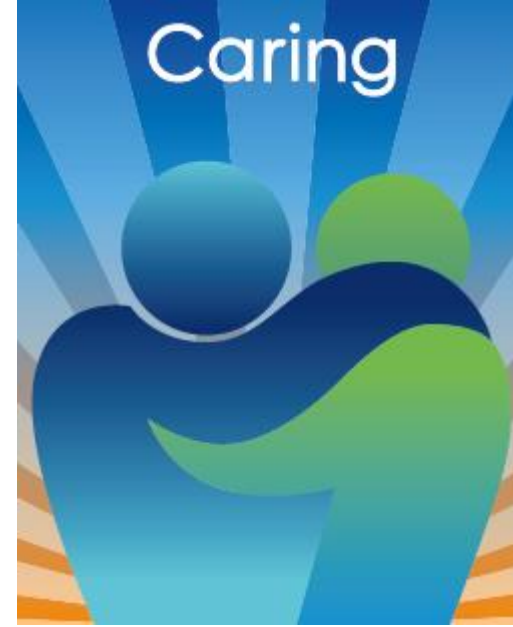




# Enhanced Support For Learning...

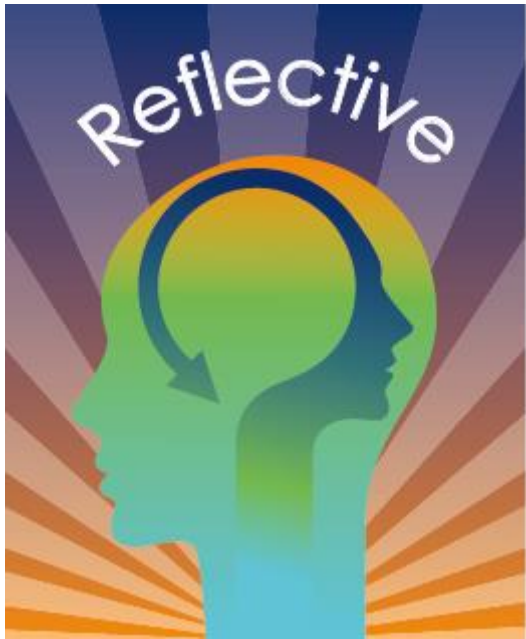
- Continue to take an active interest in your child's learning;
- Explicitly value their learning;
- Encourage high aspirations;
- Skills take practice. Every year matters;
- Enrichment opportunities.

*Take a coaching approach to supporting home learning tasks to encourage increased independence.*





*Encourage them to use SMHW and use it yourself to help support them.*



*A great tool to support independent learning with a very large bank of short videos to support revision.*



# Any questions?

[tim.darby@lvc.org](mailto:tim.darby@lvc.org)

